



Advisory Committee Meeting #3

May 22, 2018

10am - 12pm

AGENDA

- **Introductions**
- **Technical Analysis and Findings**
- **Draft Plan Recommendations**
- **Discussion and Feedback**
- **Next Steps**



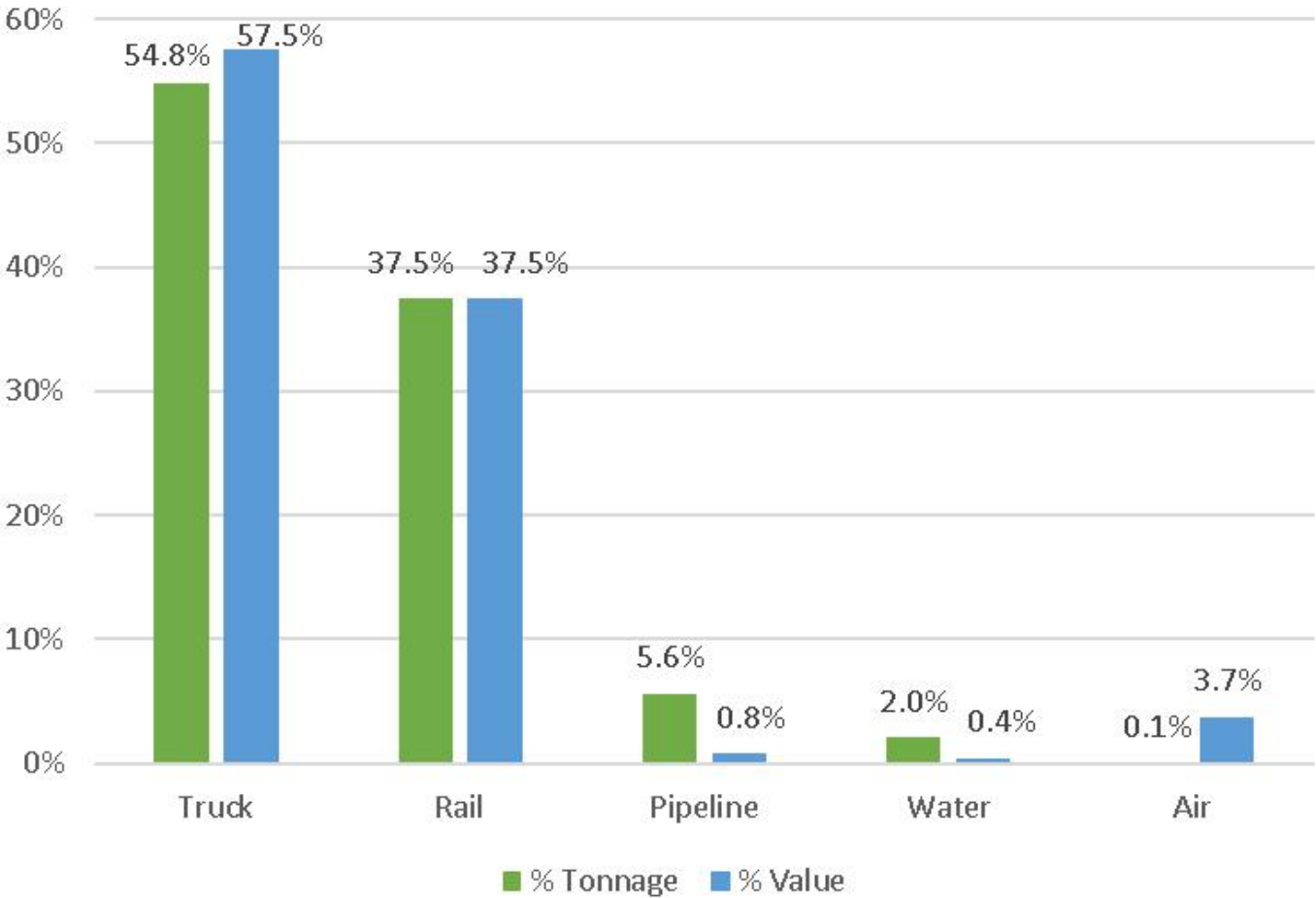
ANALYSIS PAVES THE WAY

RECENT ANALYSIS

- **Commodity Flow Analysis**
- **Truck Routes and Infrastructure Needs Analysis**
- **Pavement Conditions Field Survey**
- **Scenario Modeling (in progress)**

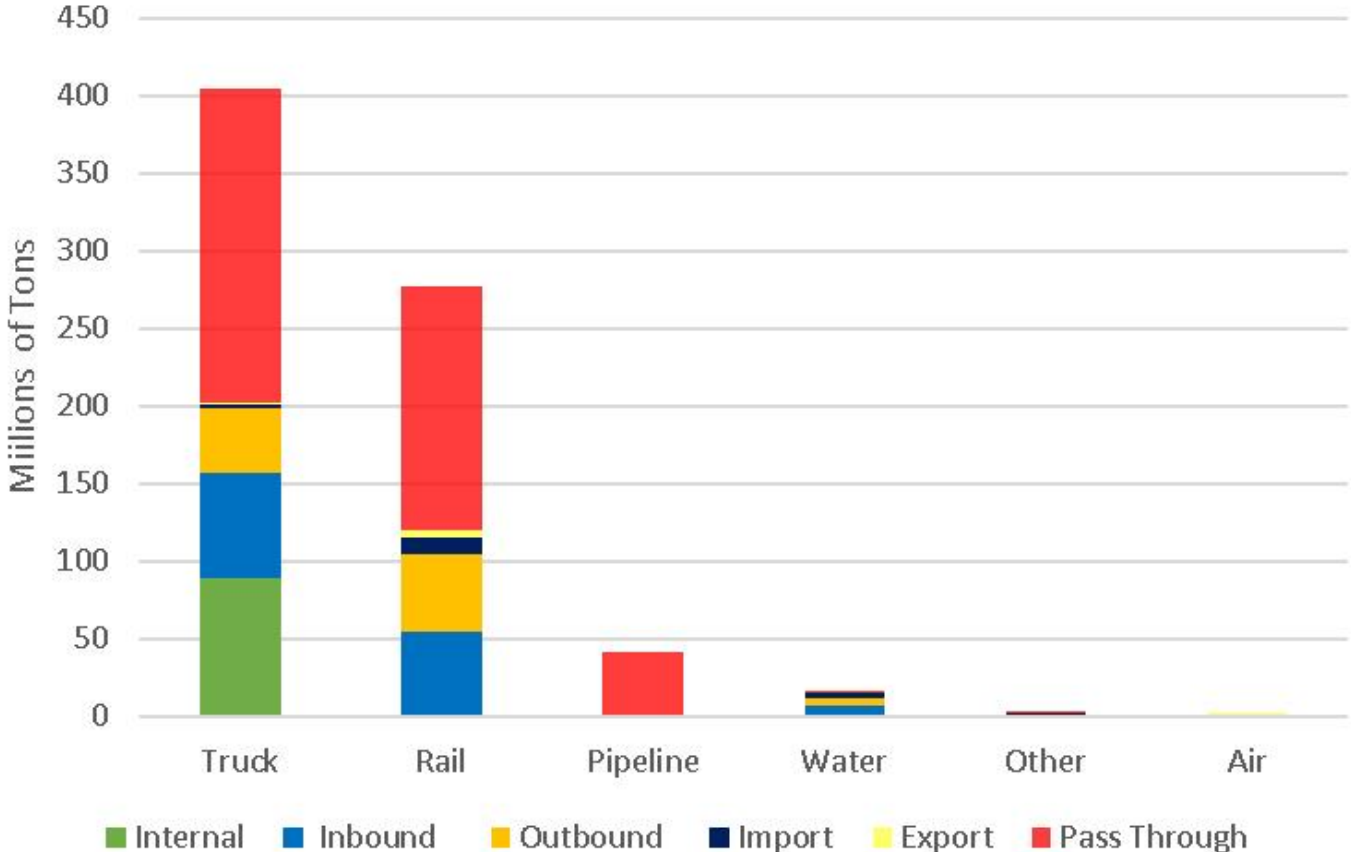
COMMODITY FLOW

Commodity Flow by Mode 2015



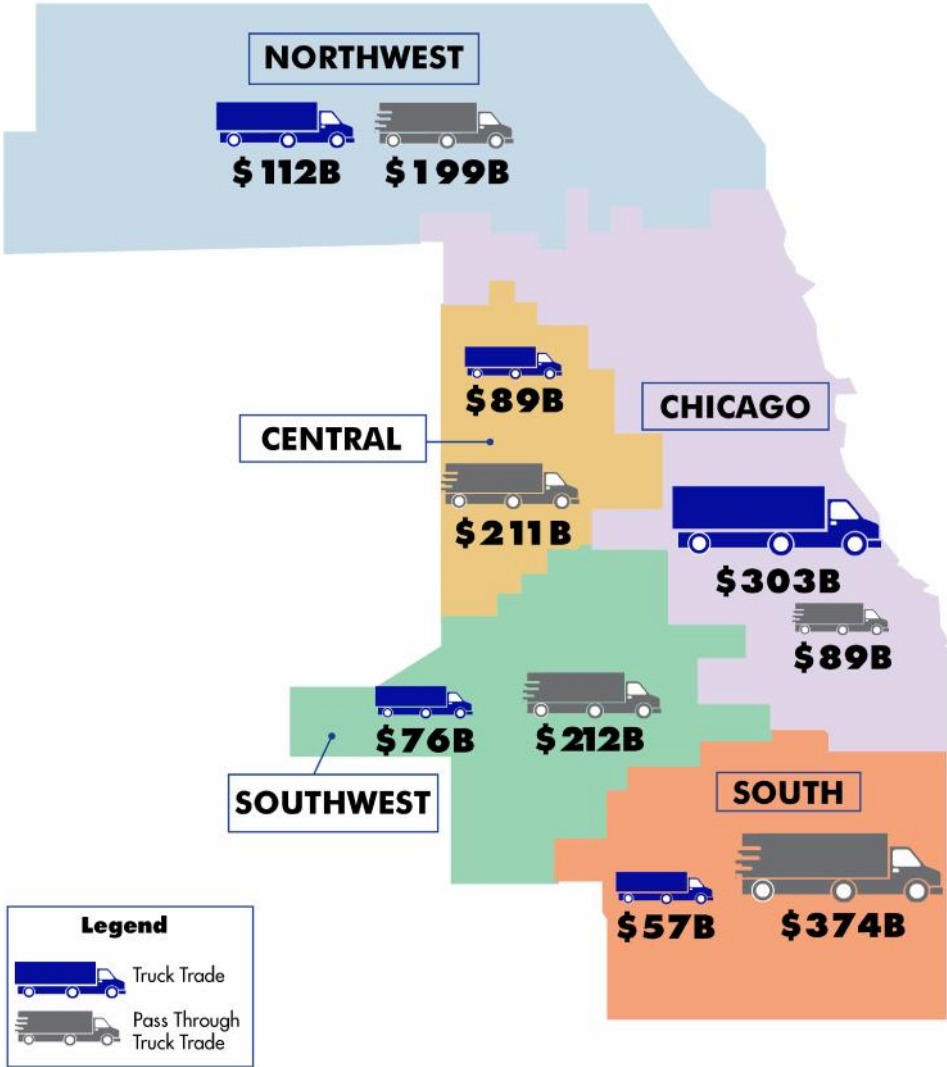
COMMODITY FLOW

Tonnage By Direction & Mode 2015



COMMODITY FLOW

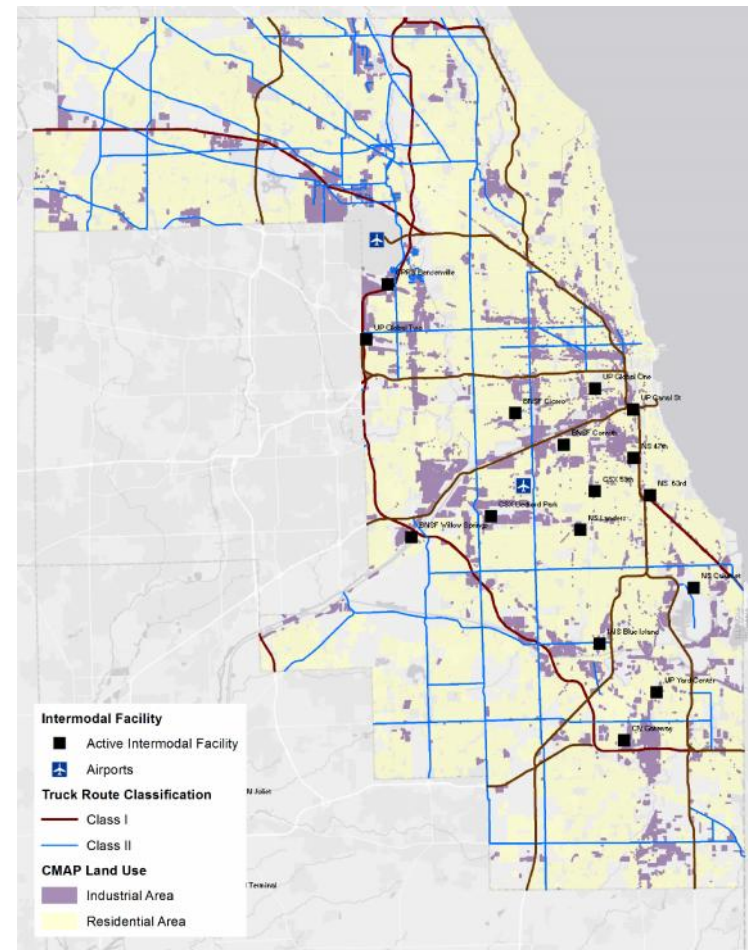
Subregion Truck Trade



TRUCK ROUTE ANALYSIS

- **Connectivity** – Does the truck route network provide mobility with few gaps or dead-ends?
- **Access** – Does the truck route network allow trucks to legally and efficiently connect businesses and freight facilities to major highways?
- **Congruity** – Does the truck route network align with regional freight networks and priority freight corridors?

Current Truck Routes

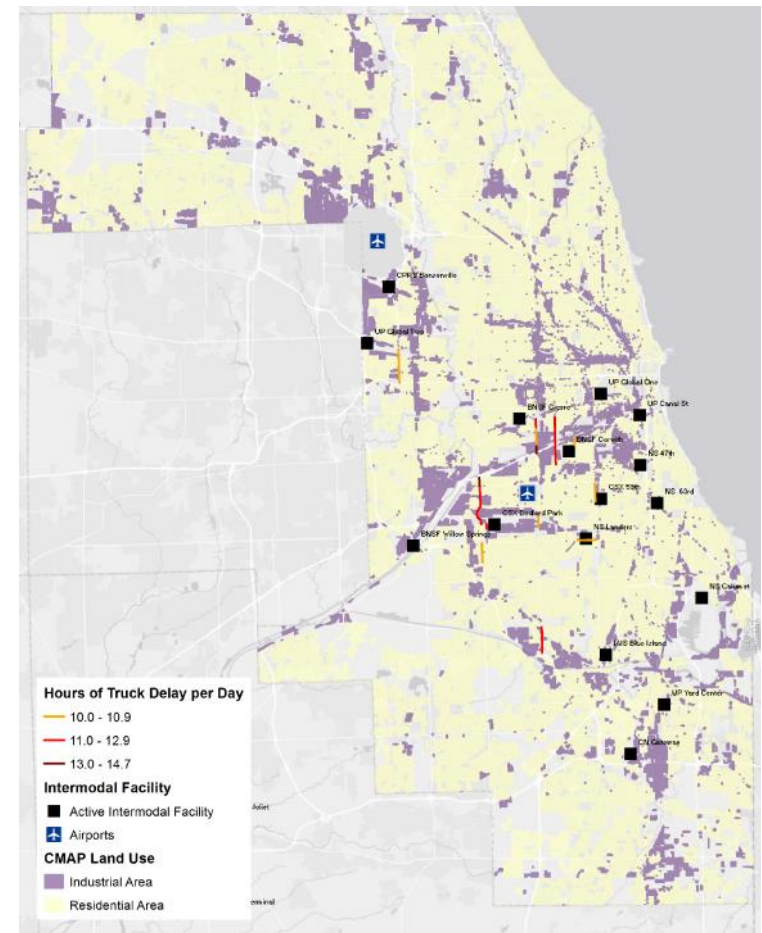


Source: IDOT, CMAP, Analysis by AECOM, 2017

FREIGHT CONGESTION

Route	From	To	Hours of Delay (max)
Harlem Ave.	I-55	95 th St.	14.7
Cicero Ave.	Ogden Ave.	I-55	13.4
Pulaski Rd.	26 th St.	47 th St.	12.0
Cicero Ave.	115 th St.	I-294	11.6
Sayre Ave.	71 st	73 rd St.	11.4
Cicero Ave.	67 th St.	73 rd St.	11.4
Kedzie Ave.	I-55	Pershing Rd.	10.7
Western Ave.	55 th St.	63 rd St.	10.6
Mannheim Rd.	Lake St.	I-290	10.3
79 th St.	Kedzie Ave.	Western Ave.	10.2

Freight Routes with More than 10 Hours Truck Delay

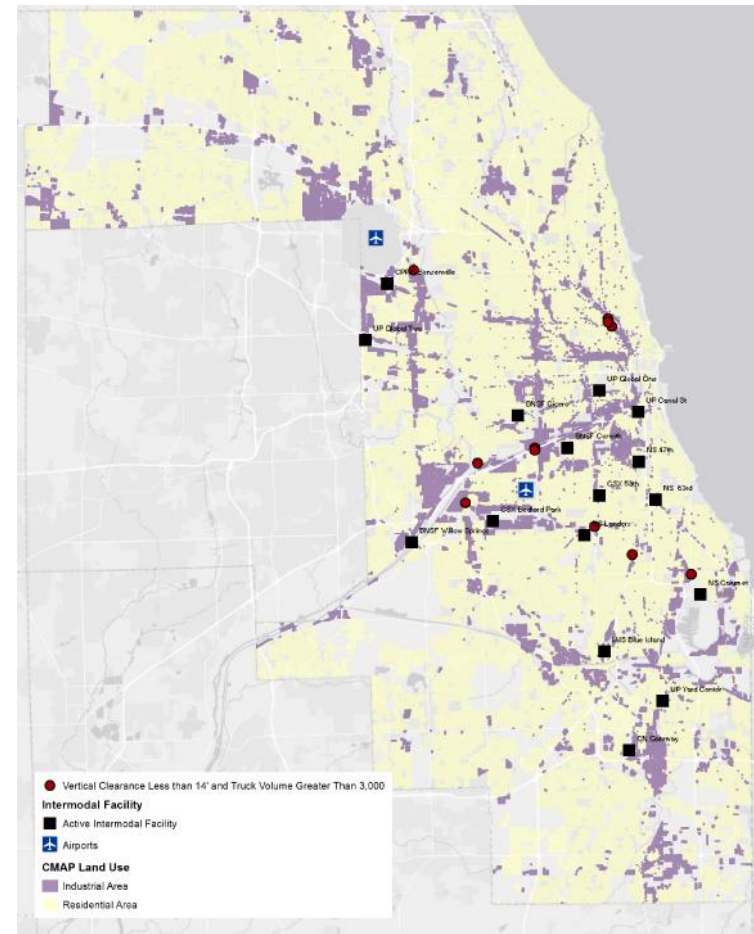


Source: IDOT, CMAP, Analysis by AECOM, Cambridge Systematics, 2017

VERTICAL CLEARANCE

Street Crossing	Railroad	Minimum Vertical Clearance	AADT	Truck Volume
IL 50 (CICERO AVE.)	BNSF	13'-11"	44,300	6,202
IL 43 (HARLEM AVE.)	C&IW (CN)	13'-09"	37,800	4,914
IL 43 (HARLEM AVE.)	AT&SF (BNSF)	13'-09"	37,800	4,914
IL 50 (CICERO AVE.)	GM&O (CN)	13'-10"	59,500	4,760
STONY ISLAND AVE.	NYC & STL (NS)	13'-04"	56,100	4,488
STONY ISLAND AVE.	C&WI (CN)	13'-04"	56,100	4,488
IL 19 (IRVING PARK RD.)	W.C.(CN)	13'-11"	35,100	3,510
IL 171 (ARCHER AVE.)	B&OCT (CSX)	13'-11"	26,300	3,419
87TH ST.	CRIE&P (UP)	13'-00"	33,400	3,340
IL 64 (NORTH AVE.)	C&NW (UP)	12'-10"	37,000	3,330
WESTERN AVE.	IHB	13'-06"	29,300	3,223
ASHLAND AVE.	C&NW (SOUTH) (UP)	12'-06"	30,100	3,010
ASHLAND AVE.	C&NW (NORTH) (UP)	12'-08"	30,100	3,010
ASHLAND AVE.	CMSTP&P (CP)	13'-00"	30,100	3,010

Freight Routes with Clearances Less Than 14'

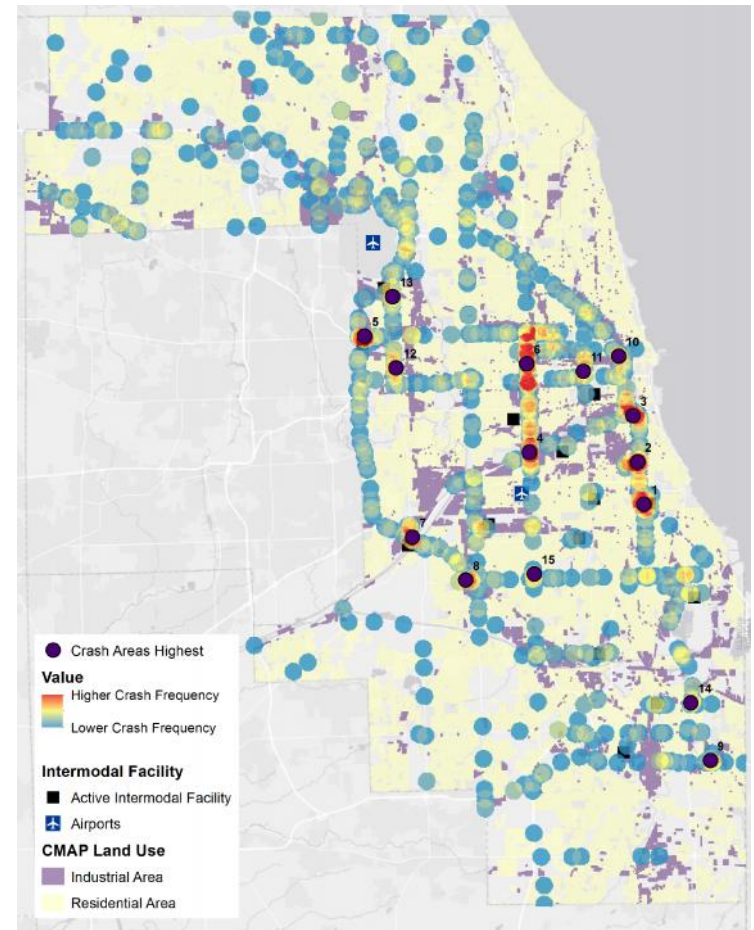


Source: IDOT, CMAP, Analysis by AECOM, Cambridge Systematics, 2017

SAFETY

Rank	Route	Location (To/From or Intersection)
1	I-94	63rd St. to Marquette Rd.
2	I-90/94	43rd Street to 47th St.
3	I-90/94	Cermak Road to 31st Street
4	Cicero Ave.	31st St. to 47th Street
5	North Ave.	I-294 to Wolf Rd.
6	Cicero Ave.	North Ave. to Fifth Ave.
7	I-294	I-55 to U.S. 45 (La Grange Rd.)
8	95th St.	Roberts Rd. to Harlem Ave.
9	I-80	At Torrence Ave.
10	I-90/94	Chicago Ave. to Grand Ave.
11	Western Ave.	Grand Ave. to I-290
12	U.S. 45 (Mannheim Rd.)	Lake St. to I-290
13	U.S. 45 (Mannheim Rd.)	Irving Park Rd. to Belmont Ave.
14	I-94	At Sibley Blvd.
15	Cicero Ave.	At 99th St.

Truck-involved Crashes Hotspots



Source: IDOT, CMAP, Analysis by AECOM, 2017

PAVEMENT SURVEY & ASSESSMENT

- Surveyed & assessed 105 miles
- Roads without IDOT data
- Intermodal connectors
- Local access roads near intermodal
- Collector/arterials near manufacturing, warehouse, industrial
- Stakeholder interview input
- High truck volume



SCENARIO MODELING

- **CMAP modeling 3 geographies**
 - Cicero Avenue
 - O'Hare Airport Area
 - Greater Calumet Region
- **Scenarios include illustrative package of projects**
- **Determine potential benefits and performance of projects**
- **Results may help refine and focus recommendations**



DRAFT RECOMMENDATIONS

DRAFT RECOMMENDATIONS

- Stakeholder input
- Technical analysis
 - Economic context
 - Land use/zoning
 - Commodity flow
 - Infrastructure needs
 - Planned improvements

Stakeholder Meetings Deepen County's Understanding of Freight Needs



Interviews with Key National, State, Regional and Local Freight Stakeholders and Policy Experts



Freight Advisory Committee Meetings



1 COOK COUNTY FREIGHT INDUSTRY OPERATORS WORK GROUP



Cook County Manufacturing/Logistics Firm Interviews



Industrial/Manufacturing Real Estate Developer Interviews

DRAFT RECOMMENDATIONS

- Leadership
- Roadway and Truck Routing Improvements
- Rail Improvements
- Coordinated Community and Economic Development





Leadership

LEADERSHIP

- **The County will take a leadership role in advocating for freight policy priorities:**
 - **Voice for municipalities**
 - **Filling the gaps**
 - Coordinate with regional agencies
 - Implement high priority activities
 - **Leadership at state & federal level**



LEADERSHIP

Advocate at Federal and State Levels

- Continue to develop strong relationships with federal and state agencies and partners to advocate for freight investments and priorities in Cook County.

Coordinate at Regional and Local Levels

- Work with regional and local partners to coordinate freight investments, priorities, and activities that continue to make our region a freight leader.

Support at Municipal Level

- Support and partner with local municipalities to plan, design, and implement freight infrastructure and that improves economic growth and quality of life.



ADVOCATE

- **Strengthen relationships with USDOT, IDOT, and CMAP to advance freight policies that benefit the County**
- **Spearhead the creation of a National Association of Counties Freight Subcommittee under the Transportation Steering Committee**



COORDINATE

- **CREATE Program**
 - 75th Street CIP
 - Remaining projects
- **Funding for projects of regional significance**



SUPPORT

- **Lead and support projects and policies where suburban municipalities may need assistance:**
 - Grade separations
 - Interstate and Tollway access
 - Truck corridor improvements that provide a regional benefit
 - Multi-jurisdictional projects
- **Support freight investments through Invest in Cook and other programs**
- **Support freight activities and policies that provide community and economic benefits**



FUNDING

- Pursue competitive freight grants
- Engage with elected officials, USDOT, IDOT, etc. to advocate for freight funding
- Align local investment with regional and County priorities





Roadway and Truck Routing Improvements

OVERVIEW

- **Connected Truck Route Network**
- **Priority Trucking Corridors**
- **Last Mile Connections**
- **Expressway Access**
- **Truck Permitting**
- **Truck Parking**



CONNECTED TRUCK ROUTE NETWORK

- **Facilitate a connected truck route network**
- **Prepare a comprehensive truck route study**
 - Sign inventory
 - Coordination with municipalities and agencies
- **Support data collection and asset management**



PRIORITY TRUCKING CORRIDORS

Route	Limits
95 th Street	I-294 to Chicago Skyway
159 th Street	Cicero Avenue to Halsted Street
Archer Avenue	Willow Springs Road to Ashland Avenue
Cicero Avenue	North Avenue to Bedford Park
Franklin Avenue	County Line Road to Mannheim Road
Halsted Street	Cal Sag Channel to I-80
Harlem Avenue	I-290 to 95 th Street
Mannheim Road	O'Hare to I-290
North Avenue	I-290/294 to Harlem Avenue
Touhy Avenue	Elmhurst Road to Mt. Prospect Road
Vollmer Road	Kedzie Avenue to Western Avenue



LAST MILE CONNECTIONS

- Improve municipal truck routes that serve industrial areas and intermodal facilities in poor condition
- Work with municipalities to explore options to fund, design, and construct last mile connectors with regional economic benefit
- Expand pavement analysis process and data collection



156th Street in Harvey



SAFETY IMPROVEMENTS

- **Non-Interstate locations**
- **Exit-ramp Interstate locations**
- **Continue collecting pavement condition data, truck-involved crash data, and truck restrictions on priority trucking corridors**



EXPRESSWAY ACCESS

- Important for freight movement, intermodal/industrial site connections and economic development
- Support and assist municipalities
- Work with Tollway and IDOT
- Assist with funding



Central Road/I-90



TRUCK PERMITTING & PARKING

■ Truck Permitting

- Recommendations of OS/OW work group
- Increase capacity to manage permitting responsibilities



■ Truck Parking

- Work with private industry, municipalities, IDOT, and Tollway
- Future study recommended



Rail Improvements

RAIL IMPROVEMENTS

- **CREATE Program**
 - 75th Street CIP
 - Remaining projects
- **At-Grade Crossing Priorities**
 - Lead engineering and construction in partnership with suburban municipalities and railroads
- **Freight and Shared-Use Facilities**
 - New/improved rail spurs
 - Access to intermodal facilities
 - Improvements on passenger/freight corridors



AT-GRADE CROSSINGS

At-Grade Crossings in Suburban Cook County with Truck AADT Greater than 1,000

Roadway Crossing	At-Grade Railroad Crossing	City	AADT	Truck AADT
115th St.	IHB-Main Blue Island to McCook (CSX)	Alsip	12,000	1,080
147th St.	Metra-RI Main - Vermont St to Joliet	Midlothian	13,700	1,096
162nd St.	CSX: GTW - Elsdon Sub	South Holland	28,100	1,911
31st St.	IHB-Main McCook to Franklin Park	La Grange Park	15,700	1,099
65th St.	BELT/IHB-North Clearing	Bedford Park	12,400	1,736
80th Ave.	Metra-RI Main - Vermont St to Joliet	Tinley Park	33,400	4,676
95th St.	CSX: GTW - Elsdon Sub	Evergreen Park	27,300	2,248
95th St.	CSX: IHB - Blue Island to 59Th St	Evergreen Park	28,100	2,248
Central Ave.	Metra-NS SWS to Manhattan	Oak Lawn	25,600	1,536
Dempster St.	Metra-MILW North Line	Morton Grove	39,000	1,950
Des Plaines River	UP: CNW - Milwaukee Sub - South	Des Plaines	21,600	1,080
Dundee Rd.	Metra-MILW North Line	Northbrook	25,200	1,764
Dundee Rd.	UP: CNW - Milwaukee Sub – North(*)	Northbrook	29,600	2,072
First Ave.	UP: CNW - Geneva Sub	Maywood	23,000	2,070
Grand Ave.	Metra-MILW West & NCS	Elmwood Park	20,500	1,435
Harlem Ave.	BNSF: A - Chicago to Galesburg CBO	Riverside	29,100	1,455
Oakton St.	UP: CNW - Milwaukee Sub - South	Des Plaines	24,100	1,687
Pulaski Rd./ Crawford Rd.	Metra-RI Main - Vermont St to Joliet	Midlothian	18,200	2,548
Thatcher Ave.	Metra-MILW West & NCS	River Grove	26,300	2,367
Touhy Ave.	UP: CNW - Milwaukee Sub – South(*)	Des Plaines	33,400	4,676
Vermont St.	Metra-RI Main - to Vermont Street	Blue Island	13,300	1,064



Coordinated Community and Economic Development

COMMUNITY & ECONOMIC DEV.

- **Coordinate and collaborate with County agencies and partners**
 - Freight network improvements
 - Land use and zoning
 - Economic development
 - Workforce opportunities



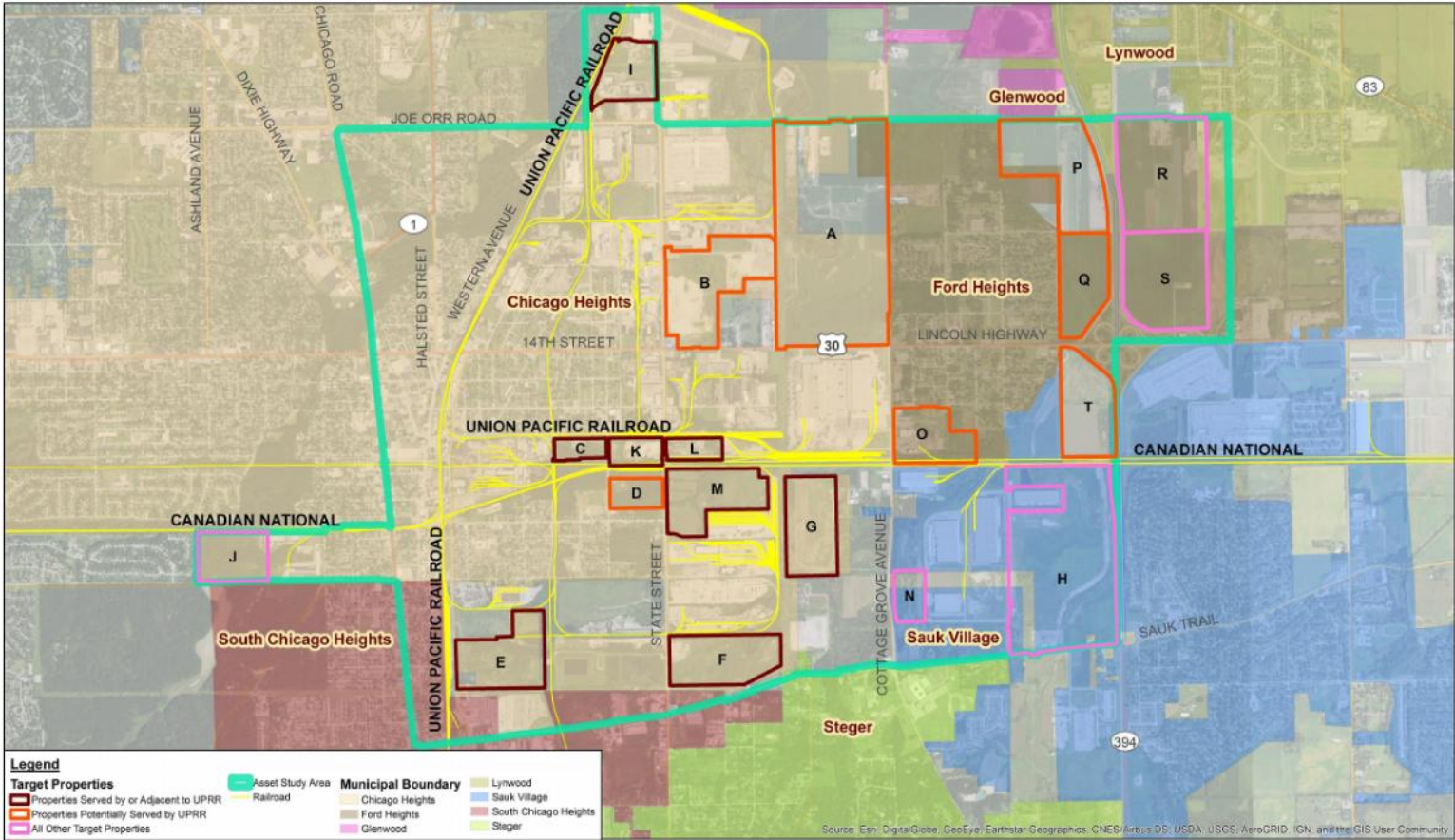
COMMUNITY & ECONOMIC DEV.

- **Coordinate with existing programs and efforts**
 - Chicago Regional Growth Corporation
 - Chicago Metro Metal Consortium
 - South Suburban Economic Growth Initiative
 - Landside access to port and air facilities

- **Align pre-development activities**
 - Environmental assessment and remediation
 - Financial incentives
 - Infrastructure improvements
 - Site assembly, clear title, and extinguish back taxes



LINCOLN HIGHWAY LOGISTICS CORRIDOR STUDY



LINCOLN HIGHWAY LOGISTICS CORRIDOR STUDY AREA

WORKFORCE

- Connect employers that benefit from infrastructure investments to screening and training programs

151st Street/Sterling Lumber Project





DISCUSSION AND FEEDBACK



NEXT STEPS

NEXT STEPS

- **Refine Recommendations and Draft Plan**
 - June
- **Develop Final Plan**
 - June/July
- **Present Plan to County Board**
 - Anticipated Fall
- **Implementation**

OUTREACH

- **Stakeholder Meetings and Briefings**
 - Spring/Summer/Fall
 - Any requests?
 - Contact Alex Beata: 312.603.7710
alexander.beata@cookcountyil.gov
- **Newsletter**
 - New issue in coming weeks
- **Website**
 - Final Plan will be posted to website
connectingcookcounty.org



THANK YOU!



John Yonan
Superintendent
Cook County Department of Transportation and Highways
john.yonan@cookcountyil.gov

WWW.CONNECTINGCOOKCOUNTY.ORG